

## Schmidt Offset Coupling L360C



### Mounting and Lubrication Instructions For Schmidt Offset Couplings

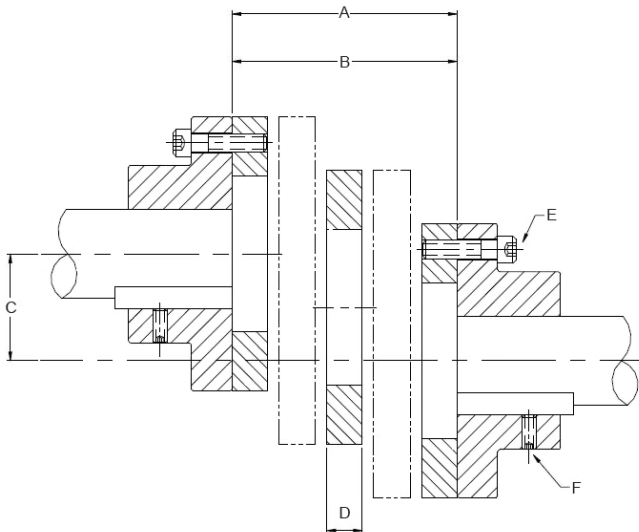
#### TOOLS REQUIRED

- Hex socket set
- Shaft alignment tools
- Cleaning cloth
- Caliper

The Schmidt Offset Coupling will function properly if these mounting, maintenance, and lubrication instructions are followed. Failure to observe these instructions may result in reduced coupling life.

**Note:** It is important that the following dimensions and tolerances are maintained before and during coupling operation.

#### MOUNTING



Position shafts and hubs according to the following values:

- **A:** Hub faces to be parallel within:..... 0.025 inch  
Speeds above **1000 rpm** should be **.015 inch** or less.  
**Note:** Minimizing angular misalignment will allow the coupling bearings to achieve their maximum lifetime.
- **B:** Distance between the hub faces: 3.81+/- .032 inch

- **C:** Minimum shaft displacement not less than: 1.500 inch  
Maximum shaft displacement not more than: 5.400 inch

**Note:** The Schmidt Offset Coupling cannot operate properly outside these limits.

- **D:** Mount coupling between hubs. After installation of the coupling, check that the center disc is free to move laterally a small amount (approximately 0.15"-.025").
- **E:** Tighten hub bolts to the end of the coupling.
- **F:** Tighten setscrews in hub.

#### LUBRICATION INSTRUCTIONS

The Schmidt Offset Coupling should be lubricated after the first 200 hours of operation, and again as specified by the lubrication schedule below.

| RPM        | Under 500        | 500 to 1000     | Over 1000       |
|------------|------------------|-----------------|-----------------|
| Lube Cycle | Every 1000 Hours | Every 500 Hours | Every 200 Hours |

**Note:** Always make certain that the lubrication fittings are clean before adding lubricant to prevent the introduction of foreign matter into the bearings. Use standard Alemite flush-type fitting Z-737.

Recommended lubricant: Darina No. 2 (EP) oil based grease.

**⚠ Caution:** Rotating equipment is potentially dangerous and should be properly guarded. It is the responsibility of the machine builder, user, or operator to follow all applicable safety codes and provide a suitable guard. Make sure the machine is "locked out" and cannot be accidentally started during installation or maintenance of coupling.

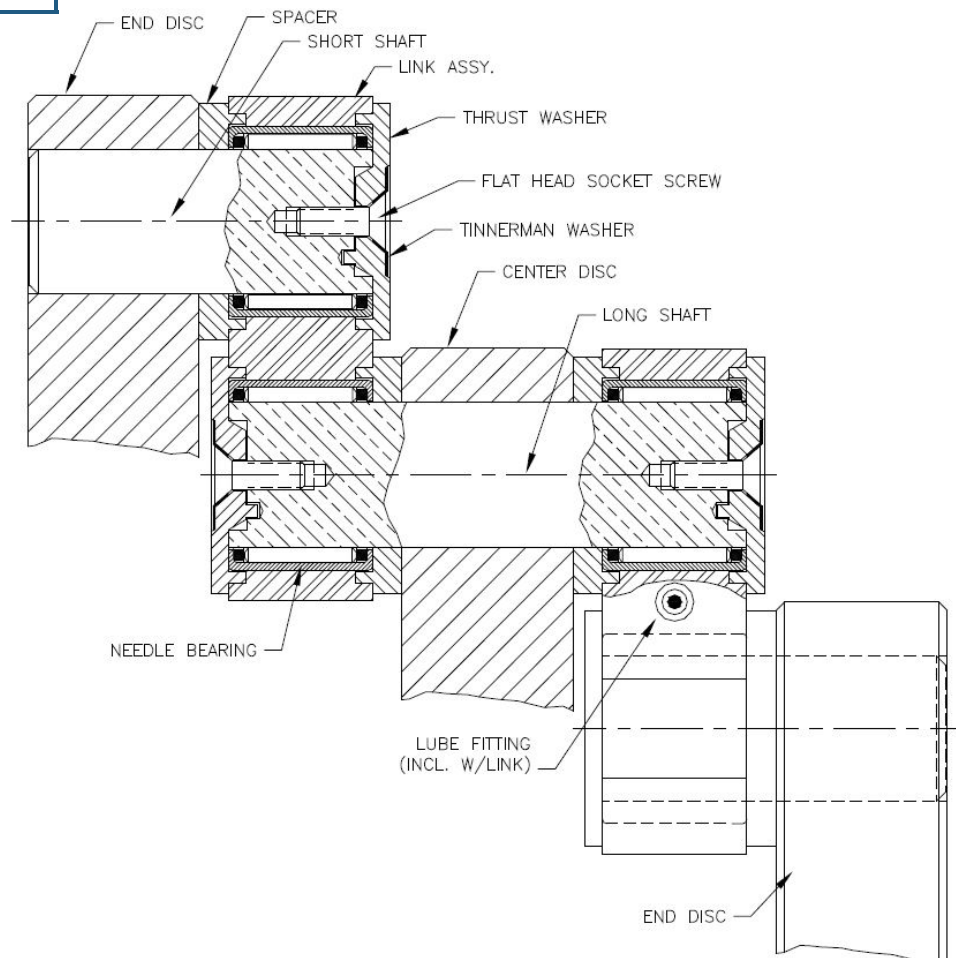
## Spare Parts For Schmidt Offset Coupling

| Item Description | Item Number | Quantity Required Per Coupling |
|------------------|-------------|--------------------------------|
|                  |             | L360C                          |
| Spacer           | S952700     | 12                             |
| Thrust washer    | S952800     | 12                             |
| Flat head screw  | S458500     | 12                             |
| Tinnerman washer | S952300     | 12                             |
| Needle bearing   | S501100     | 12                             |
| Link Assembly    | S701350     | 6                              |
| Long shaft       | S853600     | 3                              |
| Short shaft      | S853700     | 6                              |

## Rebuild Kits For Schmidt Offset Coupling

Standard rebuild kits are available for standard Schmidt Offset Couplings. Rebuild kits consist of links with needle bearings, spacers, thrust washers, Tinnerman washers, and flat head screws.

| Coupling Model | Repair Kit Part No |
|----------------|--------------------|
| L360C          | S040070            |



**ZERO-MAX**