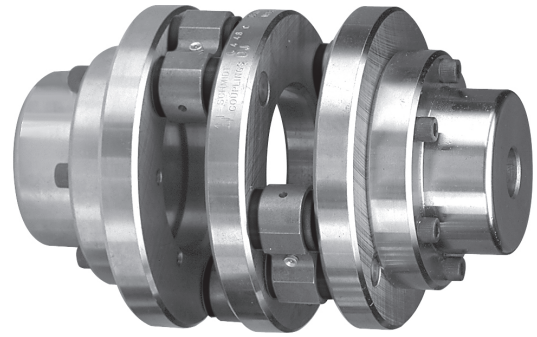


Schmidt Inline Coupling L481C & L411C



Mounting and Lubrication Instructions For Schmidt Inline Couplings

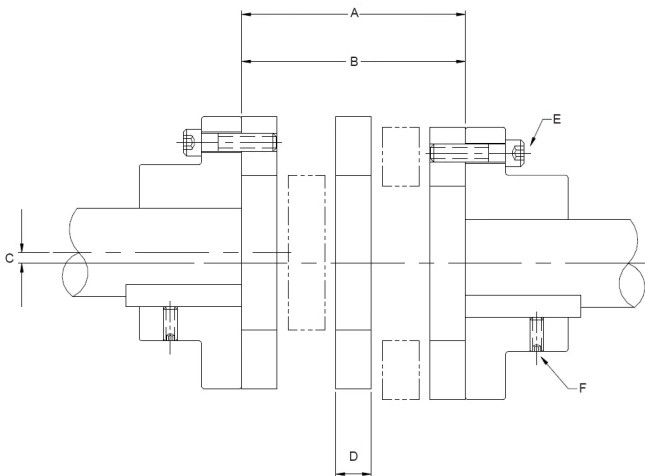
TOOLS REQUIRED

- Hex socket set
- Shaft alignment tools
- Cleaning cloth
- Caliper

The Schmidt Inline Coupling will function properly if these mounting, maintenance, and lubrication instructions are followed. Failure to observe these instructions may result in reduced coupling life.

Note: It is important that the following dimensions and tolerances are maintained before and during coupling operation.

MOUNTING



Position shafts and hubs according to the following values:

- **A:** Hub faces to be parallel within:..... 0.025 inch
Speeds above **1000 rpm** should be **.015 inch** or less.
Note: Minimizing angular misalignment will allow the coupling bearings to achieve their maximum lifetime.
- **B:** Distance between the hub faces: 7.623+/- .032 inch

- **C:** Maximum shaft misalignment not to exceed: 0.313 inch

Note: The Schmidt Inline Coupling cannot operate properly at higher misalignment than listed. For speeds over **1000 rpm**, maximum shaft misalignment should not exceed **0.060 inch**.

- **D:** Mount coupling between hubs. After installation of the coupling, check that the center disc is free to move laterally a small amount (approximately 0.015"-0.025"). Remove handling bolt after coupling has been fixed to the hubs.
- **E:** Tighten hub bolts to the end of the coupling.
- **F:** Tighten setscrews in hub.

LUBRICATION INSTRUCTIONS

The Schmidt Inline Coupling should be lubricated after the first 200 hours of operation, and again as specified by the lubrication schedule below.

RPM	Under 500	500 to 1000	Over 1000
Lube Cycle	Every 1000 Hours	Every 500 Hours	Every 200 Hours

Note: Always make certain that the lubrication fittings are clean before adding lubricant to prevent the introduction of foreign matter into the bearings. Use standard Alemite flush-type fitting Z-737.

Recommended lubricant: Lithium Base NLGI #2. Use in very dusty or moist environments may require more frequent lubrication to purge out contaminants.

⚠ Caution: Rotating equipment is potentially dangerous and should be properly guarded. It is the responsibility of the machine builder, user, or operator to follow all applicable safety codes and provide a suitable guard. Make sure the machine is "locked out" and cannot be accidentally started during installation or maintenance of coupling.

Spare Parts For Schmidt Inline Coupling

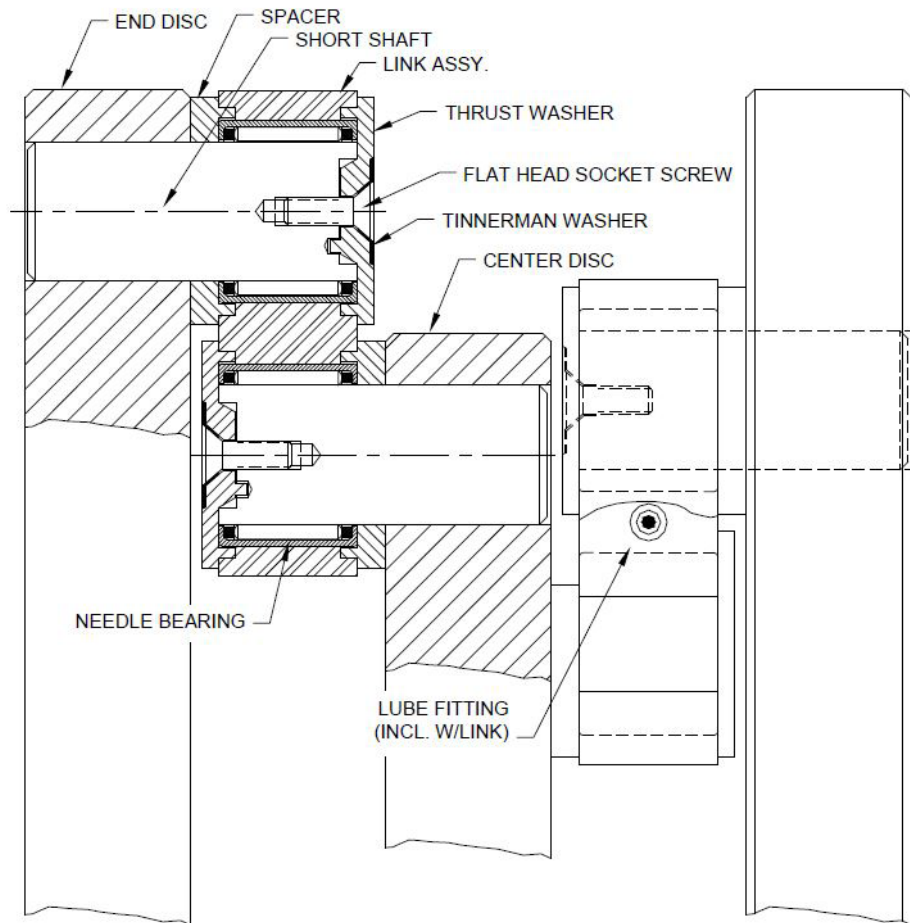
Item Description	Item Number	Quantity Required Per Coupling	
		L481C	L411C
Spacer	S953400	8	8
Thrust washer	S953500	8	8
Flat head screw	S457600	8	8
Tinnerman washer	S952300	8	8
Needle bearing	S501700	8	8
Link assembly ⁽¹⁾	S702450	4	4
Short shaft	S854600	8	8

(1) Link assembly part number includes two bearings installed in each link

Rebuild Kits For Schmidt Inline Coupling

Standard rebuild kits are available for standard Schmidt Inline Couplings. Rebuild kits consist of links with needle bearings, spacers, thrust washers, and retaining rings.

Coupling Model	Repair Kit Part No
L481C & L411C	S042050



ZERO-MAX