

## Schmidt 5D Coupling

L582S

### Mounting and Lubrication Instructions For Schmidt 5D Couplings

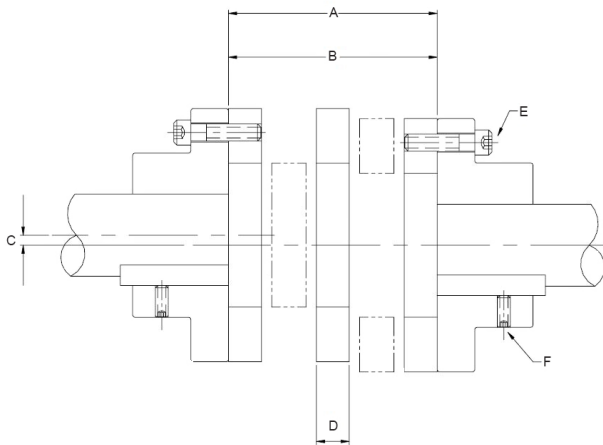
#### TOOLS REQUIRED

- Hex socket set
- Shaft alignment tools
- Cleaning cloth
- Caliper

The Schmidt 5D Coupling will function properly if these mounting, maintenance, and lubrication instructions are followed. Failure to observe these instructions may result in reduced coupling life.

**Note:** It is important that the following assembly dimensions and tolerances are maintained before and during coupling operation.

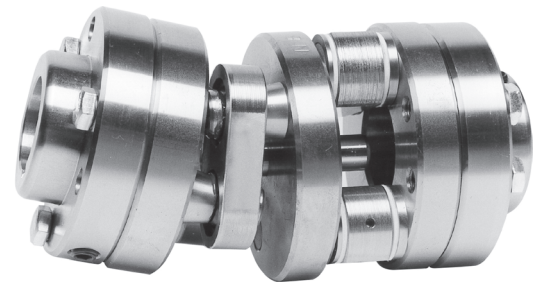
#### MOUNTING



Position shafts and hubs according to the following values:

- **A:** Hub faces to be parallel within:..... **0.349 inch**  
Speeds **above 500 rpm** should be **0.209 inch or less.**
- **B:** Distance between the hub faces:... **5.38+/- .040 inch**
- **C:** Maximum shaft misalignment:..... **0.188 inch**

**Note:** Minimizing misalignment will allow the coupling bearings to achieve their maximum lifetime. The Schmidt 5D coupling cannot operate properly at higher misalignments than listed. For speeds **over 500 rpm**, maximum shaft displacement should not exceed **0.112 inch**. For speeds over **1000 rpm** please consult factory.



- **D:** Mount coupling between hubs. You may need to remove one of the handling bar bolts to install the coupling. Finish removing handling bar and hardware after coupling has been fixed to the hubs.
- **E:** Tighten hub bolts to the end disc of the coupling.
- **F:** Tighten setscrews in hub.
- **Note:** Misalignment values listed are suggested for at time of installation. This will allow the coupling to accommodate additional misalignment from operation over time. Refer to catalog for maximum allowable misalignment specifications.

#### LUBRICATION INSTRUCTIONS

The Schmidt 5D Coupling should be lubricated after the first 200 hours of operation, and again as specified by the lubrication schedule below.

| RPM        | Under 500        | 500 to 1000     | Over 1000       |
|------------|------------------|-----------------|-----------------|
| Lube Cycle | Every 1000 Hours | Every 500 Hours | Every 200 Hours |

**Note:** Always make certain that the lubrication fittings are clean before adding lubricant to prevent the introduction of foreign matter into the bearings. Use standard Alemite flush-type fitting Z-737.

**Recommended lubricant:** Lithium Base NLGI #2.

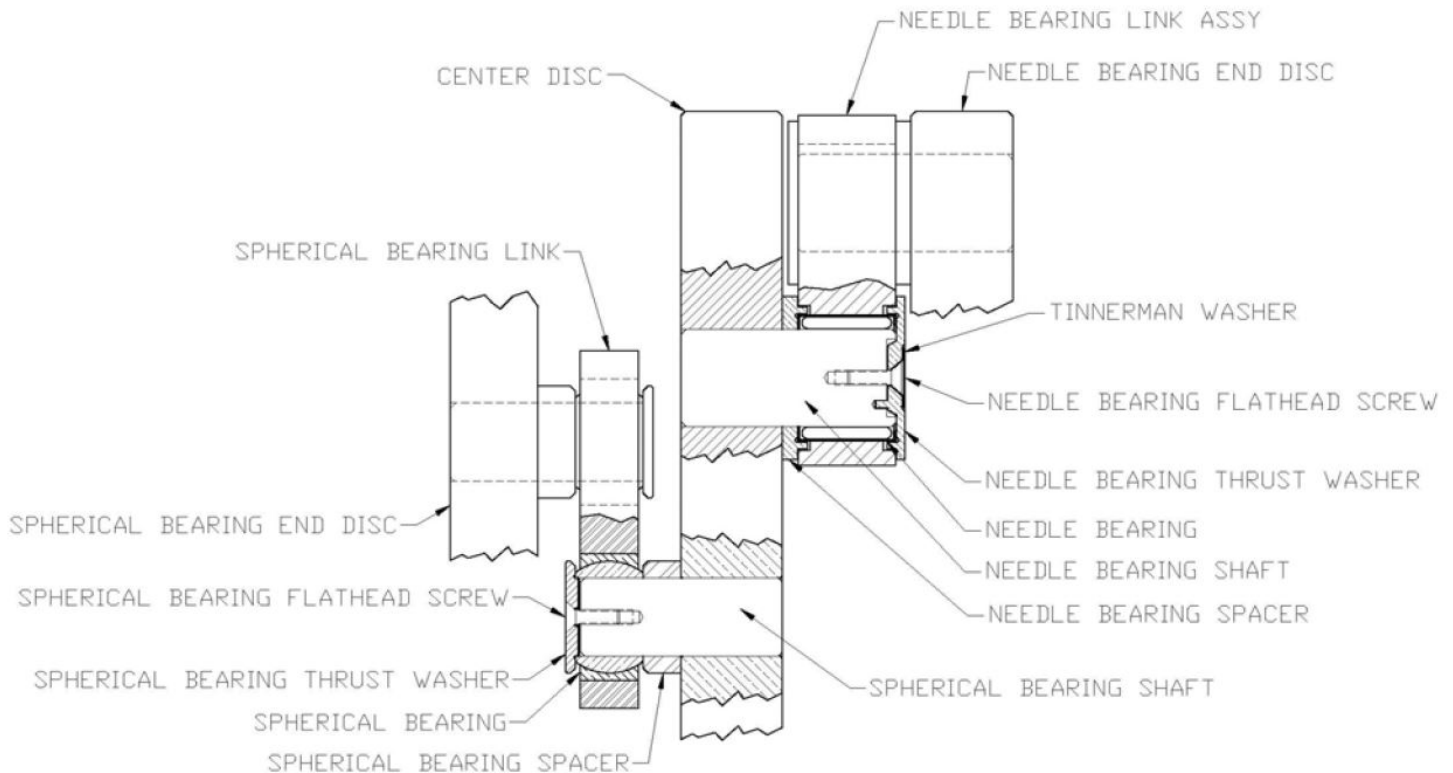
Use in very dusty or moist environments may require more frequent lubrication to purge out contaminants.



**Caution:** Rotating equipment is potentially dangerous and should be properly guarded. It is the responsibility of the machine builder, user, or operator to follow all applicable safety codes and provide a suitable guard. Make sure the machine is "locked out" and cannot be accidentally started during installation or maintenance of coupling.

## Spare Parts For Schmidt 5D Coupling: L582S

| Item Description                  | Item Number     | Qty |
|-----------------------------------|-----------------|-----|
| Needle bearing spacer             | S953400         | 4   |
| Needle bearing thrust washer      | S953500         | 4   |
| Needle bearing flat head screw    | S457600         | 4   |
| Needle bearing Tinnerman washer   | S952300         | 4   |
| Needle bearing                    | S501700         | 4   |
| Needle bearing link               | S702450         | 2   |
| Needle bearing shaft              | S854701         | 4   |
| Spherical bearing spacer          | S951000         | 4   |
| Spherical bearing thrust washer   | S951100         | 4   |
| Spherical bearing flat head screw | S457600         | 4   |
| Spherical bearing                 | S502400         | 4   |
| Spherical bearing link            | Consult factory | 2   |
| Spherical bearing shaft           | S854700         | 4   |



**/////// ZERO-MAX**