

Schmidt 5D Coupling L564S

Mounting and Lubrication Instructions For Schmidt 5D Couplings

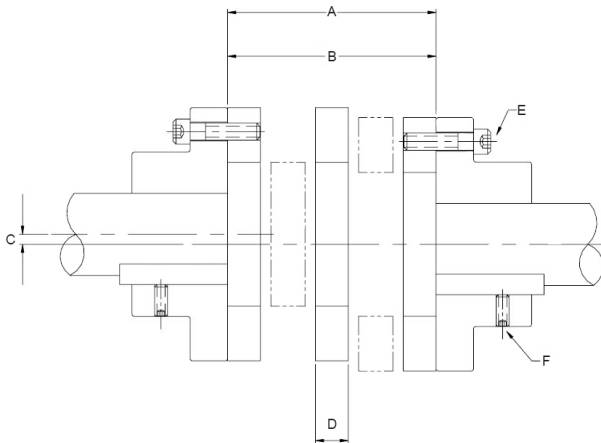
TOOLS REQUIRED

- Hex socket set
- Shaft alignment tools
- Cleaning cloth
- Caliper

The Schmidt 5D Coupling will function properly if these mounting, maintenance, and lubrication instructions are followed. Failure to observe these instructions may result in reduced coupling life.

Note: It is important that the following assembly dimensions and tolerances are maintained before and during coupling operation.

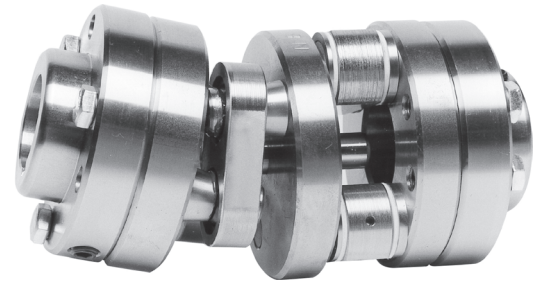
MOUNTING



Position shafts and hubs according to the following values:

- **A:** Hub faces to be parallel within:..... 0.272 inch
Speeds **above 500 rpm** should be **0.163 inch or less.**
- **B:** Distance between the hub faces:... 5.38+/- .040 inch
- **C:** Maximum shaft misalignment:..... 0.125 inch

Note: Minimizing misalignment will allow the coupling bearings to achieve their maximum lifetime. The Schmidt 5D coupling cannot operate properly at higher misalignments than listed. For speeds **over 500 rpm**, maximum shaft displacement should not exceed **0.075 inch**. For speeds over **1000 rpm** please consult factory.



- **D:** Mount coupling between hubs.
- **E:** Tighten hub bolts to the end disc of the coupling.
- **F:** Tighten setscrews in hub.
- **Note:** Misalignment values listed are suggested for at time of installation. This will allow the coupling to accommodate additional misalignment from operation over time. Refer to catalog for maximum allowable misalignment specifications.

LUBRICATION INSTRUCTIONS

The Schmidt 5D Coupling should be lubricated after the first 200 hours of operation, and again as specified by the lubrication schedule below.

RPM	Under 500	500 to 1000	Over 1000
Lube Cycle	Every 1000 Hours	Every 500 Hours	Every 200 Hours

Note: Always make certain that the lubrication fittings are clean before adding lubricant to prevent the introduction of foreign matter into the bearings. Use standard Alemite flush-type fitting Z-737.

Recommended lubricant: Lithium Base NLGI #2.

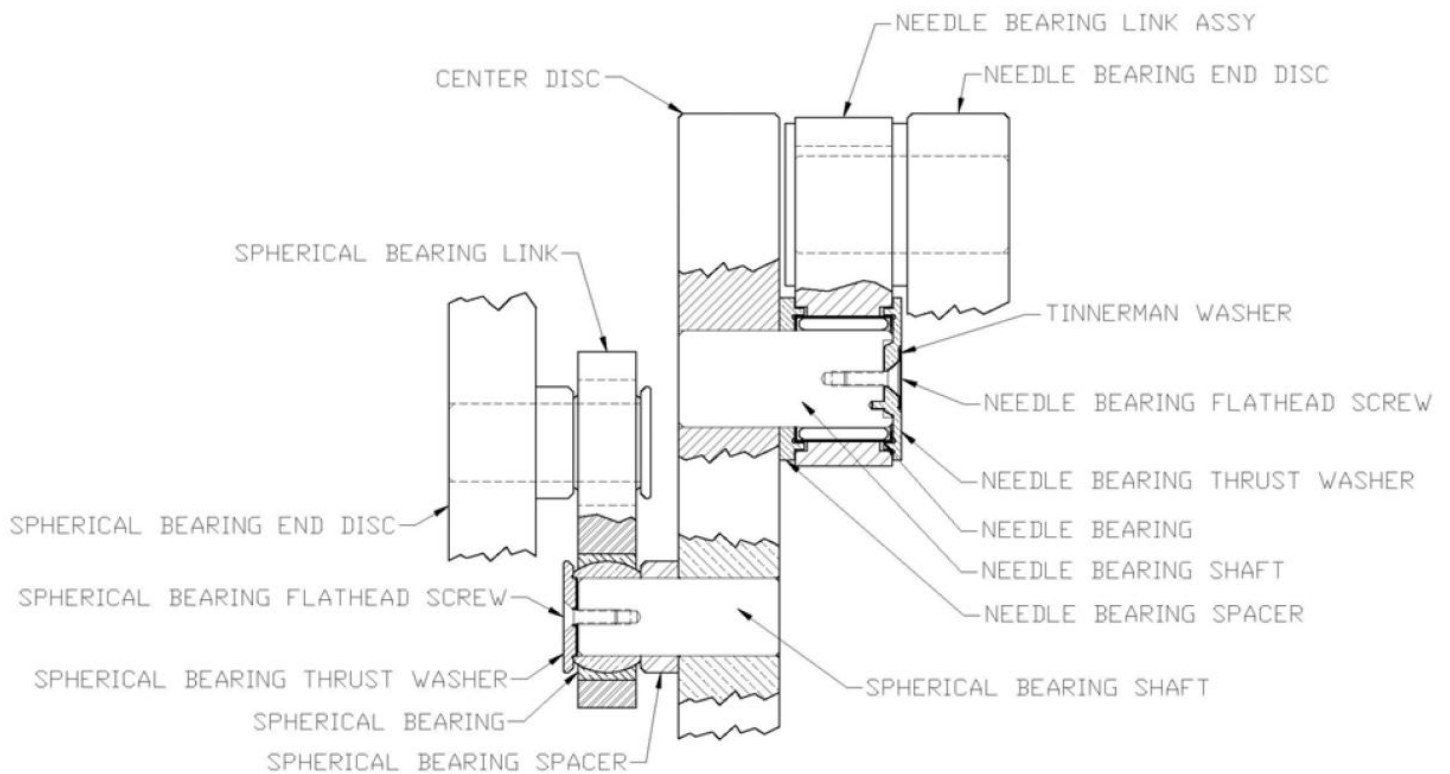
Use in very dusty or moist environments may require more frequent lubrication to purge out contaminants.



Caution: Rotating equipment is potentially dangerous and should be properly guarded. It is the responsibility of the machine builder, user, or operator to follow all applicable safety codes and provide a suitable guard. Make sure the machine is "locked out" and cannot be accidentally started during installation or maintenance of coupling.

Spare Parts For Schmidt 5D Coupling: L564S

Item Description	Item Number	Qty
Needle bearing spacer	S953100	4
Needle bearing thrust washer	S953200	4
Needle bearing flat head screw	S458500	4
Needle bearing Tinnerman washer	S952300	4
Needle bearing link w/bearing	S701750	2
Needle bearing shaft	S855120	4
Spherical bearing spacer	S950700	4
Spherical bearing thrust washer	S950800	4
Spherical bearing flat head screw	S458500	4
Spherical bearing	S502100	4
Spherical bearing link	Consult factory	2
Spherical bearing shaft	S855100	4



/////// ZERO-MAX