

# CD® COUPLINGS *SINGLE FLEX* STAINLESS STEEL

The Single Flex Composite Disc Stainless Steel coupling is an excellent choice for zero backlash applications that require stainless steel. The hub and hardware are made from 300 Series stainless steel and the composite disc material is highly resistant to many harsh chemicals.

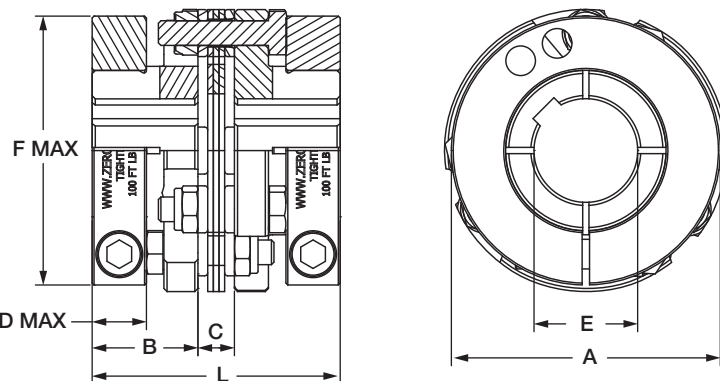


If your needs require a size of coupling that is not shown below, please contact Zero-Max.

- Consult factory for speeds higher than those listed and balancing requirements, if necessary.
- Consult factory for higher torque and higher torsional stiffness couplings.

Performance Information												
	Continuous Rated Torque	Maximum Rated Torque	Torsional Stiffness	Maximum Speed		Misalignments			A Hub		Clamped Hub	
				A & B Hub	Clamp Style Hub	Angular	Parallel	Axial	Unit Weight at Max Bore	Unit Inertia at Max Bore	Unit Weight at Max Bore	Unit Inertia at Max Bore
	in-lbs (Nm)	in-lbs (Nm)	in-lbs/Deg. (Nm/Rad)	(RPM)	(RPM)	Degrees	Inch (mm)	Inch (mm)	Lb. (kg.)	lb-in <sup>2</sup> (kg-cm <sup>2</sup> )	Lb. (kg.)	lb-in <sup>2</sup> (kg-cm <sup>2</sup> )
6A30-SS 6A30C-SS	800 (90)	1,600 (181)	6,638 (42,976)	9,000	8,000	3	0.010 (0.3)	0.050 (1.3)	2.0 (0.9)	1.9 (5.5)	2.88 (1.31)	3.11 (9.11)
6A37-SS 6A37C-SS	1,600 (181)	3,200 (362)	10,374 (67,167)	7,400	6,700	3	0.013 (0.3)	0.070 (1.8)	3.6 (1.6)	5.6 (16.3)	6.04 (2.74)	9.62 (28.13)
6A45-SS 6A45C-SS	2,500 (282)	5,000 (564)	19,138 (123,909)	6,100	5,600	3	0.015 (0.4)	0.090 (2.3)	6.4 (2.9)	14.6 (42.7)	7.65 (3.47)	18.0 (52.6)
6A52-SS 6A52C-SS	3,560 (402)	7,120 (804)	26,049 (168,656)	5,200	4,800	3	0.018 (0.5)	0.110 (2.8)	10.5 (4.8)	32.4 (94.8)	11.93 (5.41)	38.9 (113.8)

## Clamp Style Hub

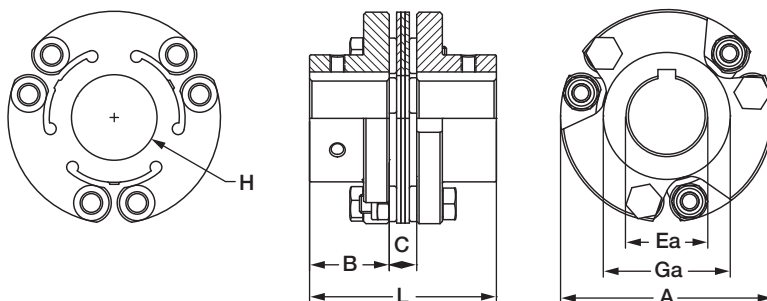


## Dimensional Information

	A	B	C	D	Max Bore		F	L
					E w/kwy	E w/o kwy		
	Inch (mm)	Inch (mm)	Inch (mm)	Inch (mm)	Inch (mm)	Inch (mm)	Inch (mm)	Inch (mm)
6A30C-SS	3.00 (76.2)	1.25 (31.8)	0.46 (11.7)	0.69 (17.5)	1.12 (28)	1.37 (35)	2.63 (66.8)	2.96 (75.2)
6A37C-SS	3.75 (95.3)	1.44 (36.6)	0.52 (13.2)	0.75 (19.1)	1.50 (38)	1.87 (48)	3.25 (82.6)	3.40 (86.4)
6A45C-SS	4.50 (114.3)	1.69 (42.9)	0.58 (14.7)	0.75 (19.1)	1.62 (42)	2.00 (50)	3.50 (88.9)	3.96 (100.6)
6A52C-SS	5.25 (133.4)	1.94 (49.3)	0.65 (16.5)	0.88 (22.4)	2.12 (55)	2.62 (65)	4.25 (108.0)	4.52 (114.8)

Performance Note: The torque capacity of keyless clamped hubs is governed by many factors, including shaft hub bore diameter, clamp size, and other installation variables. Keyless coupling hubs with bore sizes less than approximately one-half the maximum bore listed may not transmit the torque rating of the disc pack. Consult factory if your application is of high torque/small shaft variety.

## Set Screw Style Hub



## Dimensional Information

	A	B	C	Max Bore	Ga	H	L	X
				Ea A Hub				
	Inch (mm)	Inch (mm)	Inch (mm)	Inch (mm)	Inch (mm)	Inch (mm)	Inch (mm)	Inch (mm)
6A30-SS	3.00 (76.2)	1.25 (31.8)	0.46 (11.7)	1.000 (25)	1.71 (43)	1.21 (31)	2.96 (75)	0.39 (9.9)
6A37-SS	3.75 (95.3)	1.44 (36.5)	0.52 (13.3)	1.250 (32)	2.19 (56)	1.51 (38)	3.40 (86)	0.68 (17.3)
6A45-SS	4.50 (114)	1.69 (42.9)	0.58 (14.8)	1.625 (42)	2.69 (68)	1.81 (46)	3.96 (101)	0.91 (23.1)
6A52-SS	5.25 (133)	1.94 (49.2)	0.65 (16.4)	1.875 (48)	3.31 (84)	2.10 (54)	4.52 (115)	0.73 (18.5)

- "X" dimension is the minimum bolt travel required beyond the hub to disassemble the disc pack from the hubs.